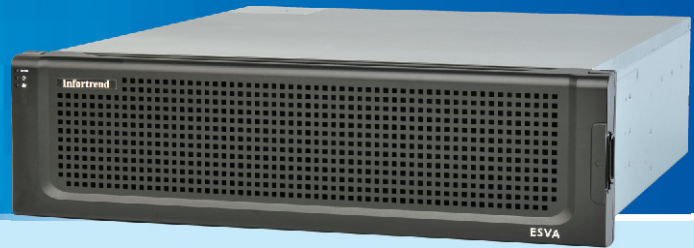




# ESVA™ Data Services



Rapidly growing data leads to burgeoning storage needs. An ideal storage solution for business critical applications should not only provide necessary capacity and performance to accommodate data and process transactions, but also ensure quick recovery from unplanned outages or disasters. However, the dynamic nature of applications makes it difficult to anticipate data demands. Leveraging storage based on traditional rigid architecture to deal with changing needs often means wasted investment in storage along with additional management overhead. The ESVA series from Infortrend builds leading-edge storage systems on a revolutionary architecture featuring virtualization and scale-out technologies. Enhanced with comprehensive data services and data protection features, the Infortrend ESVA can meet the most demanding storage requirements at an attractive price point as well as providing enhanced management efficiency.

## EFFICIENT RESOURCE UTILIZATION

Through our storage virtualization technology, the capacity and computing power of multiple ESVA storage systems are consolidated into single or multiple storage pools. Coupled with thin provisioning and an intelligent access prioritizing mechanism, the Infortrend ESVA ensures the most efficient utilization of pooled resources.

- Allocate capacity dynamically when data writes happen to minimize expense wastes on the large and underutilized data volumes
- Arrange I/Os in the queue based on their priority to allow applications to achieve respective ideal service levels
- Eliminate the administration overhead associated with capacity planning and utilization monitoring of each data volume

## NON-DISRUPTIVE STORAGE SCALING

With ESVA, storage scaling can be performed on demand. Both capacity and performance can incrementally grow without disrupting service.

- Achieve "hot" capacity scaling by simply attaching expansion enclosures to member ESVA systems of a storage pool
- Automatic, dynamic workload balancing across ESVA systems to achieve and maintain optimized performance
- Linearly scale performance for increased transactional speed by adding more ESVA systems to the storage pool

## HIGHEST DATA AVAILABILITY

The ESVA from Infortrend comes with snapshot and replication capabilities to protect mission-critical data. By strategically deploying snapshot images and full data copies, you can enjoy the highest data availability in the event you suffer an outage caused by logical errors, physical errors or disasters.

- Create granular recovery points by constantly taking space-efficient snapshot copies
- Protect data from extensive disasters with asynchronous data copies
- Achieve optimal no-data-loss protection with synchronous data copies

## Virtualization

|   |                                |
|---|--------------------------------|
| Storage-based Virtualization                        | Yes                            |
| Thin Provisioning                                   | Yes                            |
| Zero Downtime Capacity Expansion                    | Yes                            |
| Maximum Number of Disks in a Virtual Pool           | 1344/64 (Starter) <sup>1</sup> |
| Maximum Number of Virtual Volumes in a Virtual Pool | 1024                           |
| Maximum Size of a Virtual Pool                      | 2PB                            |
| Maximum Size of a Virtual Volume                    | 2PB                            |
| Minimum Size of a Virtual Volume                    | 10GB                           |

## Scale-out

|   |                             |
|---|-----------------------------|
| Horizontal performance scaling              | Yes                         |
| Distributed Load Balance                    | Yes                         |
| Balanced Data Migration                     | Yes                         |
| Prioritized Volume Access                   | Yes                         |
| Maximum Number of Systems in a Virtual Pool | 12/2 (Starter) <sup>1</sup> |

## Snapshot

|   |        |
|---|--------|
| Snapshot Rollback                                     | Yes    |
| Maximum Number of Snapshot Images for a Source Volume | 1024   |
| Maximum Number of Snapshot Images in a Virtual Pool   | 16,000 |

## Replication

|   |     |
|---|-----|
| Sync and Async Remote Replication                                 | Yes |
| Volume Copy/Volume Mirror   | Yes |
| Disaster Tolerance  | Yes |
| Maximum Number of Source Volumes in a Virtual Pool                | 32  |
| Maximum Number of Concurrent Replication Pairs of a Source Volume | 8   |
| Maximum Number of Concurrent Replication Pairs in a Virtual Pool  | 256 |

<sup>1</sup> For the details of Starter version, please check ESVA FC or iSCSI Series datasheets.

24x7 Global Support : <http://esva.infortrend.com/G-support/>

© 2009 Infortrend Technology, Inc. All rights reserved.

· Any information provided herein is without warranties of any kind of and is subject to change without prior notice.  
· Infortrend, SANWatch and EonPath are registered trademarks of Infortrend Technology, Inc.

· Infortrend logo and ESVA are trademarks of Infortrend Technology, Inc.  
· All other names, brands, or services are trademarks or registered trademarks of their respective owners.



Asia Pacific  
Infortrend Technology, Inc.

Tel: +886-2-2226-0126  
E-mail: sales.ap@infortrend.com

Americas  
Infortrend Corporation

Tel: +1-408-988-5088  
E-mail: sales.us@infortrend.com

Europe (EMEA)  
Infortrend Europe Ltd.

Tel: +44-1256-707-700  
E-mail: sales.eu@infortrend.com

Germany  
Infortrend Deutschland GmbH

Tel: +49(0)-8945-15187-0  
E-mail: sales.de@infortrend.com

China  
Infortrend Technology, Ltd.

Tel: +86-10-6310-6168  
E-mail: sales.cn@infortrend.com

Japan  
Infortrend Japan, Inc.

Tel: +81-3-5730-6551  
E-mail: sales.jp@infortrend.com